

United States Department of the Interior
National Park Service

National Register of Historic Places Registration Form

This form is for use in nominating or requesting determinations for individual properties and districts. See instructions in National Register Bulletin, *How to Complete the National Register of Historic Places Registration Form*. If any item does not apply to the property being documented, enter "N/A" for "not applicable." For functions, architectural classification, materials, and areas of significance, enter only categories and subcategories from the instructions. Place additional certification comments, entries, and narrative items on continuation sheets if needed (NPS Form 10-900a).

1. Name of Property

Historic name Brant, Claude and Alberta, House
Other names/site number Fisher, Harry and Fern, House; KHRI #011-712
Name of related Multiple Property Listing N/A

2. Location

| | | |
|--|-----|---------------------|
| Street & number <u>216 South Eddy Street</u> | N/A | not for publication |
| City or town <u>Fort Scott</u> | N/A | vicinity |
| State <u>Kansas</u> Code <u>KS</u> County <u>Bourbon</u> Code <u>011</u> Zip code <u>66701</u> | | |

3. State/Federal Agency Certification

As the designated authority under the National Historic Preservation Act, as amended,
I hereby certify that this x nomination request for determination of eligibility meets the documentation standards for registering properties in the National Register of Historic Places and meets the procedural and professional requirements set forth in 36 CFR Part 60.

In my opinion, the property x meets does not meet the National Register Criteria. I recommend that this property be considered significant at the following level(s) of significance:

 national statewide x local Applicable National Register Criteria: A B x C D

8-22-22

Signature of certifying official/Title Patrick Zollner, Deputy SHPO

Date

Kansas State Historical Society
State or Federal agency/bureau or Tribal Government

Register of Historic Kansas Places listed 8/20/2022

In my opinion, the property meets does not meet the National Register criteria.

Signature of commenting official

Date

Title

State or Federal agency/bureau or Tribal Government

4. National Park Service Certification

I hereby certify that this property is:

| | |
|--|--|
| <u> </u> entered in the National Register | <u> </u> determined eligible for the National Register |
| <u> </u> determined not eligible for the National Register | <u> </u> removed from the National Register |
| <u> </u> other (explain:) | |

National Register of Historic Places listed 9/27/2022

Signature of the Keeper

Date of Action

Brant, Claude and Alberta, House
Name of Property

Bourbon County, Kansas
County and State

5. Classification

Ownership of Property
(Check as many boxes as apply.)

| | |
|-------------------------------------|------------------|
| <input checked="" type="checkbox"/> | private |
| <input type="checkbox"/> | public - Local |
| <input type="checkbox"/> | public - State |
| <input type="checkbox"/> | public - Federal |

Category of Property
(Check only **one** box.)

| | |
|-------------------------------------|-------------|
| <input checked="" type="checkbox"/> | building(s) |
| <input type="checkbox"/> | district |
| <input type="checkbox"/> | site |
| <input type="checkbox"/> | structure |
| <input type="checkbox"/> | object |

Number of Resources within Property
(Do not include previously listed resources in the count.)

| <u>Contributing</u> | <u>Noncontributing</u> | |
|---------------------|------------------------|--------------|
| 1 | 1 | buildings |
| | | sites |
| | | structures |
| | | objects |
| 1 | 1 | Total |

Number of contributing resources previously listed in the National Register

6. Function or Use

Historic Functions
(Enter categories from instructions.)

DOMESTIC/Single Dwelling

Current Functions
(Enter categories from instructions.)

DOMESTIC/Single Dwelling

7. Description

Architectural Classification
(Enter categories from instructions.)

LATE VICTORIAN/Eclectic

Materials
(Enter categories from instructions.)

foundation: STONE, BRICK
walls: STONE
roof: METAL
other: _____

Brant, Claude and Alberta, House
Name of Property

Bourbon County, Kansas
County and State

Narrative Description

Summary

The Claude and Alberta Brant house, 216 South Eddy Street in Fort Scott, Bourbon County, Kansas is a two-and-a-half-story stone veneered house on a stone and brick foundation.¹ The house is located on Lot 8 in Block 127 of the Fort Scott Original Town (Figure 1). The house is nominated to the National Register of Historic Places under Criterion C in the area of Architecture as a locally significant and eclectic example of the Queen Anne style with Neoclassical influences. Built in 1906, the core of the house is designed in a late version of Queen Anne style. The house has a steeply pitched roof with lower side cross gables set atop chamfered bays and front and rear dormers. A columned two-story stone Neoclassical porch projects from the house's east façade. The house's exterior is regularly coursed Indiana rusticated limestone. The house retains its original fenestration patterns and surrounds. Interior features include the original floor plan, the main and servants' stairways and abundant original woodwork of stained oak. The property includes the house and a modern garage, a non-contributing building. The house is in excellent condition and retains integrity of design, form, setting and materials.

Elaboration

Site

The Brant House is located in the middle of a city block facing east toward South Eddy Street, a brick street located three blocks west of National Avenue, Fort Scott's main north-south thoroughfare. The house is two blocks west of the Bourbon County courthouse. A public alley runs behind the house. The house retains integrity in its setting within a block of historic houses. The large stone house has a small front yard with a walk leading from the street to the house. The walk splits at the entrance to approach the two sets of front steps. The southeast corner of the front yard has a modern fountain and concrete koi pond. The concrete driveway leading to the rear garage is located on the south side of the house.

The frame garage behind (west of) the house was likely built after 1947.² The double garage has modern board and batten siding that is painted on the east elevation. The garage has a modern east garage door, a north entrance door and a north window.

Exterior

The Brant house has a steeply sloped pyramidal roof with a center projecting stone chimney. An additional stone chimney pierces the roof's northwest corner. The house has narrow eaves with modillions in the cornices. Low cross gables set on chamfered bays project from the center of the north elevation and the west portion of the south elevation. Large dormers project from the east and west elevations placed atop the front and rear porches. The house's wood shingle roof was replaced with concrete-coated steel shingles around 2014. The house is veneered in regularly coursed gray Indiana rusticated limestone. The stone has a smooth center stringcourse above the first-story windows and a smooth watercourse. Wood fishscale shingles cover the east façade dormer and the gable of the west dormer. The house's windows retain their one-over-one double-hung fenestration patterns with stone sills in the first and second stories and smooth stone lintels in the second story. Most windows are fronted by aluminum storms and screens.

The house's **east façade** is four bays wide (Photos 1, 2, 3). Viewing from left to right or south to north, bay one has a large double-hung picture window in the first story and a window in the second story. Bay two has a small diamond-paned window in the first story and a single entrance door in the second story that leads from the interior to the upper level of the front porch. Bay three has a single entrance door in the first story and a diamond-paned window in the second story. The entrance door has an ornately carved stone lintel bearing the

¹ Sanborn maps show the house as of stone construction but the house is stone veneer.

² Sanborn maps show a rear outbuilding in the garage's location up to 1947 but of a different size and configuration.

Brant, Claude and Alberta, House
Name of Property

Bourbon County, Kansas
County and State

number 216. Bay four has a first-story chamfered bay with three windows and a second-story single window. A full one-story front porch with a two-story curved portico spans the façade. The porch has two outer one-story columns and three two-story center columns. All columns have massive smooth capitals. Two sets of stone steps lead from the front walk to the lower porch level. The center portion of the front porch projects in a half circle with a metal balustrade in the first story and a wood balustrade in the second story. A hipped dormer projects from the third story atop the second-story porch roof. The dormer has a trio of east windows separated by Ionic pilasters and surrounded by outer pairs of Ionic pilasters. The dormer's north and south elevations each contains a single window in a wall of fishscale shingles.

The east portion of the **south elevation** (Photos 1, 2) has two windows in the first story and one window in the second story. The west portion of the south elevation is filled with a two-story chamfered bay containing three windows in each story and topped with a gabled dormer. The cornice under the dormer has scrolled brackets with pendant finials in each corner. The gable end of the dormer has two center levered windows surrounded by woodwork in a sunburst pattern.

The house's **north elevation** is three bays wide (Photo 4). The first (east) bay has one window in each story. The second bay is a two-story chamfered bay with ornament matching the south chamfered bay. The bay's three first-story windows are small and topped with a smooth stone lintel course. The second-story windows are mid-level between the first and second stories. The gabled dormer has a window surrounded by woodwork in a sunburst pattern. A mid-level arched window is located just west of the center bay. The north elevation's third bay has two windows in the first story and one window in the second story. A stone chimney rises from the roof above this bay.

The rear **west elevation** is four bays wide (Photo 5). Bay one has a one-story enclosed frame porch approached by a set of stone steps. The porch has a west door and boarded windows in the west and north elevations. A small window is located in the second story above the porch's hipped roof. A two-story porch fills bays two and three. The porch is stone in the first story with two windows. The second-story sleeping porch has a lower flared wall clad in fishscale shingles and framing built for large screens. The wall behind the sleeping porch contains a north door and south double-hung window. A gabled dormer projects from the third story of the porch, containing two window openings within a wall of fishscale shingles.³ The basement level of the porch extension contains a rectangular basement window. The fourth bay in the west elevation has a window in the first story, a diamond-paned window in the second story and a modern cellar door at ground level.

Interior

The **first story** of the Brant house interior has ceilings that are approximately nine feet, six inches tall (Figure 5 floor plan). Floors are narrow oak. All woodwork throughout the house is oak and all walls and ceilings are covered with non-historic wallpaper. All windows and doors throughout the house are topped with lintels containing an upper row of dentil molding.

One enters the house through a paneled wood and glass door to a small vestibule. A door with a beveled oval window leads to the house's foyer. The house's main staircase dominates the foyer (Photo 6). Nine steps lead to the chamfered landing with seating where it reverses to the second story. The stair's substantial balustrade has turned spindles and newel posts with dentil ornament. The west wall of the stairway is paneled, concealing a closet that continues under the house's north chamfered bay. The first-story northeast parlor has built-in seating in the east chamfered bay that continues to the north and south walls as wainscoted benches (Photo 10). The southeast living room has an angled limestone fireplace in the northwest corner (Photo 7). The fireplace stone matches the house's exterior stone. The lower portion of the fireplace is dressed stone. A carved mantle is topped with a beveled mirror surrounded by Tuscan columns that support a triangular flue. The living room's east wall has a paneled wood elevator that rises to the house's southeast bedroom.⁴ Pairs of paneled wood pocket doors separate the living room from the foyer and the southwest dining room (Photo 8).

³ The south window in the porch gable is boarded.

⁴ The elevator was reportedly installed in the 1940s or 1950s by Judge Harry Fisher for his disabled wife.

Brant, Claude and Alberta, House

Name of Property

Bourbon County, Kansas

County and State

The dining room ceiling has a grid of oak coffered beams. The dining room walls are paneled with oak wainscoting topped with a picture rail supported by brackets (Photo 9). A paneled north door leads to the remodeled northwest kitchen. Two stair steps and a door on the kitchen's north wall lead to the house's back stairway. West doors in the kitchen lead to the house's small northwest enclosed porch and the west butler's pantry. The butler's pantry has a sink and its original cabinets to the ceiling. A small bathroom is located adjacent south of the butler's pantry.

Ceilings in the **second story** of the Brant house are approximately nine feet tall, the floors are pine and most of the woodwork is painted (Figure 6 floor plan). The main stairway and the back stairs are located on the north side of the house. The main stairway leads from the first story to the third story. A central second-story foyer leads to four bedrooms and the house's main bathroom. The northeast corner room served as a home office to Judge Harry Fisher, who owned the house from 1942 to 1993. The small room with a southwest corner closet continues use today as an office space. The southeast bedroom contains the house's elevator, as well as a door to the second-story level of the front porch. The southwest main bedroom has a chamfered bay with three windows and a west doorway accessing the house's rear sleeping porch. A bathroom is in the center of the house's west side. The woodwork in the small northwest bedroom retains its original stained finish.

Most of the house's **third story** is an unfinished open space. A small foyer at the top of the stairs is paneled on the walls and ceiling in pine beadboard. The area contains a closet and an east doorway to a bedroom located within the east dormer over the front porch. The room has cove ceilings and an east trio of windows. The house's **basement** has brick and stone walls. The area is functional, providing space for utilities and storage. A wood door located in the south portion of the west wall provides access to the exterior cellar entrance.

Integrity Statement

The Claude and Alberta Brant House retains excellent historic integrity in design, form, setting and materials. The house's massing, stone surfaces, floor plan and grand appearance all reflect its original function as the Queen Anne home of an important family in Fort Scott. Exterior character-defining features include a steeply pitched roof with lower side cross gables, chamfered bays, and front and rear dormers. Significant features also include the columned two-story stone porch, regularly coursed Indiana rusticated limestone and original fenestration patterns and surrounds. Interior character-defining features include the original floor plan, the original stairways, original stone fireplaces, plaster walls, wainscoting and other ornamentation. The abundant original woodwork of stained oak such as the door and window surrounds, flooring, trims, and baseboards is extant. The property includes the house and a modern garage, a non-contributing building.

Brant, Claude and Alberta, House
Name of Property

Bourbon County, Kansas
County and State

8. Statement of Significance

Applicable National Register Criteria

(Mark "x" in one or more boxes for the criteria qualifying the property for National Register listing.)

- A Property is associated with events that have made a significant contribution to the broad patterns of our history.
- B Property is associated with the lives of persons significant in our past.
- C Property embodies the distinctive characteristics of a type, period, or method of construction or represents the work of a master, or possesses high artistic values, or represents a significant and distinguishable entity whose components lack individual distinction.
- D Property has yielded, or is likely to yield, information important in prehistory or history.

Criteria Considerations

(Mark "x" in all the boxes that apply.)

Property is:

- A Owned by a religious institution or used for religious purposes.
- B removed from its original location.
- C a birthplace or grave.
- D a cemetery.
- E a reconstructed building, object, or structure.
- F a commemorative property.
- G less than 50 years old or achieving significance within the past 50 years.

Areas of Significance

ARCHITECTURE

Period of Significance

1906-1936

Significant Dates

1906

Significant Person

(Complete only if Criterion B is marked above.)

N/A

Cultural Affiliation

N/A

Architect/Builder

Ireland & Rollings—Contractor

Period of Significance (justification)

The Period of Significance is tied to the house's construction, beginning with the year the house was built (1906) and concluding with the year that Claude Brant sold the house (1936).

Criteria Considerations (justification)

N/A

Brant, Claude and Alberta, House
Name of Property

Bourbon County, Kansas
County and State

Narrative Statement of Significance

Summary

The Claude and Alberta Brant house at 216 South Eddy Street in Fort Scott, Bourbon County, Kansas is nominated to the National Register of Historic Places under Criterion C, locally significant in the area of Architecture. The house was built in 1906 for Claude and Alberta Brant. The period of significance extends to 1936, the year that Claude Brant sold the house. The eclectic house was designed in a unique combination of the Queen Anne and Neoclassical styles. The Queen Anne style was most popular from around 1880 to 1900 but persisted until around 1910. Character-defining features of the style appear in the Brant house in its irregular footprint, steeply pitched roofline, one-over-one fenestration, interior layout and decorative interior moldings. The use of Indiana limestone sets this house apart from any other in Fort Scott. The house's two-story front porch adds a distinctive Neoclassical element to the façade. The Neoclassical style gained popularity in this country in the first half of the 1900s. The front porch with its two-story entrance portico and smooth column capitals is a style that is rare or non-existent in Bourbon County.

The Brant house has always been an owner-occupied single-family home with rooms occasionally rented to boarders. Only the kitchen has been remodeled. The house has been well maintained and continues to retain its architectural integrity as one of Fort Scott's most intact historic residences.

Elaboration

Architecture

The main block of the Claude and Alberta Brant House is an excellent example of the Queen Anne style. The house was built in 1906, but its form and interior details are more consistent with houses built before 1900. Its steep, irregular roofline, massing, textured and shingled gables and interior trim are all character-defining features of the style. The Queen Anne form is further supported by an interior with interconnected spaces and a prominent entry hall. The Queen Anne style is described by Virginia McAlester in *A Field Guide to American Houses* as the dominant style for residential architecture in the United States from about 1880 until 1900 and continuing with decreasing popularity until 1910.⁵

The Brant House falls into the Queen Anne subcategory of a hipped roof with lower cross gables, a group that McAlester estimates includes more than 50 percent of the Queen Anne houses. The Brant House interior fits well with Leland Roth's description of a Queen Anne house in *American Architecture: A History*. Roth describes a typical Queen Anne interior as having a free floor plan arranged around a reception hall that also serves as a stair hall. Main public rooms usually open to each other. Interiors also typically contain an abundance of wood trim.⁶ The first story of the Brant House features an elaborate stairway and a central reception hall leading to the parlor, living room and dining room. The woodwork is fairly simple for the era but elegant and substantial.

The Queen Anne style was enthusiastically embraced by the public. Pattern books and mail-order house plans made the style very accessible and adaptable to changes sought by the owner or builder. The Queen Anne style was an excellent way for prominent families to display financial and social success. Claude Brant added his own touch by cladding the house in Indiana limestone, an unusual treatment for the style.

Perhaps the most unique feature of the house is its pronounced Neoclassical front porch. The porch creates an unusual combination of styles rarely found in original Kansas construction. The façade's structure falls into the relatively uncommon subtype of a full-height entry porch with a lower full-width porch. Most examples of this type were built between 1895 and 1915.⁷ The columns' capitals differ from most Neoclassical porches, in that

⁵ Virginia Savage McAlester, *A Field Guide to American Houses* (New York: Alfred A. Knopf, 2013), 350.

⁶ Leland M. Roth, *American Architecture, A History* (Boulder, CO: Westview Press, 2000), 242.

⁷ McAlester, 434.

Brant, Claude and Alberta, House
Name of Property

Bourbon County, Kansas
County and State

they lack Greek Revival, Ionic or Corinthian capitals. Neoclassical was the dominant house style in the U.S. during the first half of the 20th century, spanning from 1895 to around 1955. The front porch is the Brant House's only character-defining element of the style. Houses built in purer forms of the style typically include elaborate columns, a symmetrical façade with a center door, elaborate door and window surrounds and multipaned windows.⁸

The impressive house gave the Brants the opportunity to demonstrate their status and taste in Fort Scott and Bourbon County. The completed stone house was the most impressive on the block (Figure 2). Fort Scott retains few extant examples of large, Queen Anne homes. Examples of the style can be found in the 1888 Herbert House at 512 S. Judson Street (National Register listed 23 December 2021), the circa 1887 Walter Chenault house at 812 S. National Avenue and the 1886 Jacob Rumbaugh house at 720 S. National Avenue.⁹ The Brant House is an excellent eclectic example of the Queen Anne style.

History

Dr. Claude Brant purchased Lot 8 of Block 127 in the Fort Scott Original Town from Eugene F. Ware in October 1905 for \$1400. Sanborn maps show the lot on South Eddy Street as holding a small one-story dwelling and carriage house. According to an article in the *Fort Scott Daily Tribune*, Brant planned to rent the house until construction began on his own house in the spring of 1906.¹⁰ From the announcement of the purchase, Brant let it be known that his house would be built of Indiana limestone.

Dr. Claude Brant, described in the October 1905 article as an “enterprising dentist,” was born in 1871 in Monroe County, Indiana and attended dental school at Indiana University. His parents came to Fort Scott in 1885, staying for three years while his father, J.E. Brant, served as pastor of the First Methodist Church.¹¹ In April 1902, Claude Brant married Alberta Doud in Bourbon County, Kansas. Alberta Brant was born in Olathe, Kansas in 1876. Her family came to Fort Scott in 1879 and remained there. Her mother and three sisters also lived in the Fort Scott neighborhood of the new Brant.¹² Dr. Brant began running weekly advertisements for his dental practice in May 1902. The ads ran in local newspapers for a year, likely to build up his clientele. Dr. Brant practiced dentistry in Fort Scott for 37 years. Claude and Alberta Brant had two daughters and a son—Claudia, Dorothy and Bridane. Dr. Brant was also active in civic affairs, serving as the president of the Fort Scott Board of Education, a city councilman, Kiwanis, a Mason and as a trustee of the First Methodist Church.¹³

Construction on the Brant house began the summer of 1906 with the announcement that the firm of Ireland and Rollings would be the builder and that the house would be veneered in Indiana limestone.¹⁴ As construction progressed, one local newspaper jested, “That Dr. Claude Brant’s new house is causing many people to open their mouths. It is built from their teeth.”¹⁵ Work on the house was completed in the fall of 1906 and the Young Ladies’ Society of the Methodist Church held a tea party at the new home in November. Furnished rooms were frequently advertised for rent at 216 S. Eddy Street in the local newspapers during the 1910s. A 1916 ad offered two furnished rooms with a porch, possibly the two adjoining east bedrooms.¹⁶

⁸ McAlester, 436.

⁹ William G. Calhoun, *Fort Scott, A Pictorial History* (Historic Preservation Association of Bourbon County, Inc., 1981), 204, 208.

¹⁰ *Fort Scott Daily Tribune*, 28 October 1905, 6.

¹¹ “History of the Church” *The Fort Scott Republican*, 13 May 1906, 1.

¹² “Mrs. Manette Doud Dead,” *Fort Scott Daily Tribune*, 2 November 1914, 1.

¹³ “Dr. Claude Brant, 68, Retired Dentist, Dies” *The Indianapolis Star*, 17 September 1940, 18.

¹⁴ *Fort Scott Tribune*, 5 May 1906, 6.

¹⁵ *Fort Scott Tribune*, 11 August 1906, 2.

¹⁶ *Fort Scott Daily Tribune*, 27 March 1916, 5.

Brant, Claude and Alberta, House
Name of Property

Bourbon County, Kansas
County and State

Alberta Doud died suddenly in September 1923.¹⁷ Claude Brant sold the house to Roy Watkins in the fall of 1936.¹⁸

Judge Harry Fisher purchased the house in 1942 and lived there with his wife Fern, son Harry and daughter Emma. The house's elevator was reportedly installed in the 1940s by the Fishers because Fern Fisher could not walk up the stairs. Judge Harry Fisher, born in 1887, graduated from the Kansas School of Law in 1913 and served six years as county attorney for Linn County in southeast Kansas. He served in the Kansas House of Representatives from 1933 to 1939. He became a close friend of Governor Alf Landon and the two were chummy until Landon's death in 1987. Judge Harry Fisher became a 6th Judicial District judge in 1941, serving Bourbon, Linn and Miami counties. He retired in 1960. Julia Fern Fisher died in 1965. Judge Fisher owned the house until one month before his death 1993. A commemorative postcard was made in 1987 honoring Judge Fisher's 100th birthday. The postcard shows Judge Fisher sitting on the house's front porch and sitting at his desk in his office (Figure 3). Harry Fisher sold the house to John Walker and his wife in April 1993. He died May 24, 1993.

In 2006, John Walker sold the house to Larry and Terri Stewart, who sold it one year later in October 2007 to the current owners, Matthew and Susan Messer.

Fort Scott History

Fort Scott (population 8087 in 2010) is the county seat of Bourbon County, Kansas.¹⁹ The town is located on the Marmaton River in southeast Kansas five miles west of the Missouri-Kansas state line. Fort Scott was established in 1842 as a frontier fort charged with keeping the peace between American Indians and white settlers. The fort closed in 1853 as Kansas Territory prepared to open to settlement but reopened during the era of "Bleeding Kansas" to maintain law and order between the pro- and anti-slavery factions. The fort served as a crucial Union Army base during the Civil War.

The town of Fort Scott was incorporated on February 27, 1860. In 1863, Bourbon County residents voted to make it the county seat. At the end of the Civil War, Fort Scott's population of 1800 began to grow. The U.S. Army returned to Fort Scott in 1869 when the railroad came through Bourbon County. The troops were based in the town to protect railroad construction crews from angry farmers whose land was being confiscated for the railroad right-of-way. The troops left in 1872 and railroads contributed to the future prosperity of the town, leading to a population increase and a building boom that lasted into the late 1880s. The area's resources of coal, timber and agricultural products relied on the railroad which, in turn, brought people and commerce to the municipality.²⁰

Fort Scott became a first-class city in 1888 with a peak population of 16,159 residents. The city had a mule-drawn streetcar system, a municipal water works, brick yards, machine shops, an electric light plant under construction and freight traffic that ran in seven directions. New downtown brick buildings replaced small, frame shops built during Fort Scott's first wave of construction. In 1890, however, the Federal census recorded 11,942 city residents.²¹

Fort Scott struggled to meet economic challenges in the early 1900s. The 1907-1908 recession caused the Missouri Pacific Railroad to lay off thousands of workers, closing its machine shops for a week in 1908. The First National Bank of Fort Scott failed and closed permanently in 1908. The streetcar system shut down in 1918. But several insurance companies were formed in the town in the early 1900s. Three railroads continued

¹⁷ "Mrs. Brant Dead" *The Fort Scott Herald*, 20 September 1923, 1.

¹⁸ Claude Brant died in September 1940 in Bloomington, Indiana.

¹⁹ The United States Census. <https://www.census.gov/quickfacts/fortscottcitykansas>

²⁰ Dale E. Nimz, "Fort Scott Downtown Historic District," National Register of Historic Places Registration Form. 25 March 2009.

²¹ Nimz.

Brant, Claude and Alberta, House

Name of Property

Bourbon County, Kansas

County and State

to served Fort Scott into the 1930s—the Missouri Kansas & Texas, the St. Louis and the San Francisco. The town had become an important division point for the “Frisco.” The town became the center of a diversified agricultural region that specialized in dairy farming.²² The Borden Condensery plant opened in 1918, operating until the 1950s. Fort Scott continued to lose population in the 1900s from 10,463 residents in 1910 to 8,297 in 2000.²³

Conclusion

The Claude and Alberta Brant House retains its integrity in design, form, setting and materials. The house’s massing, stone surfaces, floor plan and grand appearance all reflect its original function as the Queen Anne home of an important family in Fort Scott. The Brant House is architecturally significant as an interesting and eclectic combination of two distinctive architectural styles. It is eligible for National Register listing under Criterion C. The house today is an impressive and distinctive example of early 20th-century architecture in a Kansas town.

²² Susan Jezak Ford, “Eugene Ware Elementary School,” National Register of Historic Places Registration Form. 13 September 2004.

²³ Nimz.

Brant, Claude and Alberta, House
Name of Property

Bourbon County, Kansas
County and State

9. Major Bibliographical References

Bibliography (Cite the books, articles, and other sources used in preparing this form.)

Calhoun, William G. *Fort Scott, A Pictorial History*. Historic Preservation Association of Bourbon County, Inc., 1981.

"Dr. Claude Brant, 68, Retired Dentist, Dies." *The Indianapolis Star*, 17 September 1940.

Ford, Susan Jezak. "Eugene Ware Elementary School." National Register of Historic Places Registration Form. 13 September 2004.

Fort Scott Daily Tribune, 28 October 1905; 27 March 1916.

Fort Scott Tribune, 5 May 1906; 11 August 1906.

"History of the Church." *The Fort Scott Republican*, 13 May 1906.

McAlester, Virginia Savage McAlester. *A Field Guide to American Houses*. New York: Alfred A. Knopf, 2013.

Mrs. Brant Dead." *The Fort Scott Herald*, 20 September 1923.

"Mrs. Manette Doud Dead." *Fort Scott Daily Tribune*. 2 November 1914.

Nimz, Dale E. "Fort Scott Downtown Historic District." National Register of Historic Places Registration Form. 25 March 2009.

Roth, Leland M. *American Architecture, A History*. Boulder, CO: Westview Press, 2000.

The United States Census. <https://www.census.gov/quickfacts/fortscottcitykansas>

Previous documentation on file (NPS):

preliminary determination of individual listing (36 CFR 67 has been requested)
 previously listed in the National Register
 previously determined eligible by the National Register
 designated a National Historic Landmark
 recorded by Historic American Buildings Survey # _____
 recorded by Historic American Engineering Record # _____
 recorded by Historic American Landscape Survey # _____

Primary location of additional data:

State Historic Preservation Office
 Other State agency
 Federal agency
 Local government
 University
 Other
Name of repository: Homeowner's collection

Historic Resources Survey Number (if assigned): __KHRI 209-2820-00088

Brant, Claude and Alberta, House
Name of Property

Bourbon County, Kansas
County and State

10. Geographical Data

Acreeage of Property Less than one acre

Provide latitude/longitude coordinates OR UTM coordinates.

(Place additional coordinates on a continuation page.)

Latitude/Longitude Coordinates

Datum if other than WGS84: _____

(enter coordinates to 6 decimal places)

| | | | | | |
|---|-----------------------------|-------------------------------|---|--------------------|---------------------|
| 1 | <u>37.8392</u> Latitude: | <u>-94.7110</u> Longitude: | 3 | _____ Latitude: | _____ Longitude: |
| 2 | _____ Latitude: | _____ Longitude: | 4 | _____ Latitude: | _____ Longitude: |

Verbal Boundary Description (describe the boundaries of the property)

The house is located in the Fort Scott Original Town, Lot 8 and the north 1' of Lot 10 in Block 127, coordinates 37.8392, -94.7110. Beginning at the corner of lot 8, west 120 ft, south 50 ft, east 15 ft, south 1 ft, east 105 ft, and north 51 ft. The property is bounded on the north and south by property lines, on the west by a public alley and on the east by a public sidewalk.

Boundary Justification (explain why the boundaries were selected)

The boundaries include the lot historically associated with the Claude and Alberta Brant House.

11. Form Prepared By

name/title Susan Jezak Ford
organization Citysearch Preservation date 4 April 2022
street & number 3628 Holmes Street telephone 816-210-2096
city or town Kansas City State MO zip code 64109
e-mail citysusan@gmail.com

Property Owner: (complete this item at the request of the SHPO or FPO)

name Matthew J and Susan P Messer
street & number 216 South Eddy Street telephone 913-238-8025
city or town Fort Scott state Kansas zip code 66701

Paperwork Reduction Act Statement: This information is being collected for applications to the National Register of Historic Places to nominate properties for listing or determine eligibility for listing, to list properties, and to amend existing listings. Response to this request is required to obtain a benefit in accordance with the National Historic Preservation Act, as amended (16 U.S.C.460 et seq.).

Brant, Claude and Alberta, House
Name of Property

Bourbon County, Kansas
County and State

Estimated Burden Statement: Public reporting burden for this form is estimated to average 100 hours per response including time for reviewing instructions, gathering and maintaining data, and completing and reviewing the form. Direct comments regarding this burden estimate or any aspect of this form to the Office of Planning and Performance Management, U.S. Dept. of the Interior, 1849 C. Street, NW, Washington, DC.

Additional Documentation

Submit the following items with the completed form:

Photographs

Submit clear and descriptive photographs. The size of each digital image must be 1600x1200 pixels (minimum), at 300 ppi (pixels per inch) or larger. Key all photographs to a sketch map or aerial map. Each photograph must be numbered and that number must correspond to the photograph number on the photo log. For simplicity, the name of the photographer, photo date, etc. may be listed once on the photograph log and doesn't need to be labeled on every photograph.

Photograph Log

Name of Property: Brant, Claude and Alberta, House
City or Vicinity: Fort Scott
County: Bourbon State: Kansas
Photographer: Susan Jezak Ford
Date Photographed: 21 February 2022

Description of Photograph(s) and number, include description of view indicating direction of camera:

- 1 of 10: Southeast elevation. Camera pointing northwest.
- 2 of 10: Southeast elevation. Camera pointing northwest.
- 3 of 10: Northeast elevation. Camera pointing southwest.
- 4 of 10: North elevation. Camera pointing southwest.
- 5 of 10: West elevation. Camera pointing southeast.
- 6 of 10: Interior staircase. Camera pointing northwest.
- 7 of 10: Interior living room fireplace. Camera pointing northwest.
- 8 of 10: Interior living room. Camera pointing west.
- 9 of 10: Interior dining room. Camera pointing north.
- 10 of 10: Interior parlor. Camera pointing northeast.

Figures

Include GIS maps, figures, scanned images below.

- Figure 1. Location map. Bing map accessed 29 March 2022.
- Figure 2. Postcard showing Brant house. Image created between 1906 and 1912.
- Figure 3. Commemorative postcard celebrating Harry Fisher's 100th birthday, 1987.
- Figure 4. Exterior photo map. Google Maps accessed 14 February 2022.
- Figure 5. Interior plan of first floor. Susan Jezak Ford, not to scale.
- Figure 6. Interior plan of second floor. Susan Jezak Ford, not to scale.

Brant, Claude and Alberta, House
Name of Property

Bourbon County, Kansas
County and State

Photo 1 Southeast elevation. Camera pointing northwest.



Photo 2. Southeast elevation. Camera pointing northwest.



Brant, Claude and Alberta, House
Name of Property

Bourbon County, Kansas
County and State

Photo 3. Northeast elevation. Camera pointing southwest.



Photo 4. North elevation. Camera pointing southwest.



Brant, Claude and Alberta, House
Name of Property

Bourbon County, Kansas
County and State

Photo 5. West elevation. Camera pointing southeast.



Photo 6. Interior staircase. Camera pointing northwest.



Brant, Claude and Alberta, House
Name of Property

Bourbon County, Kansas
County and State

Photo 7. Interior living room fireplace. Camera pointing northwest.



Photo 8. Interior living room. Camera pointing west.



Brant, Claude and Alberta, House
Name of Property

Bourbon County, Kansas
County and State

Photo 9. Interior dining room. Camera pointing north.



Photo 10. Interior parlor. Camera pointing northeast.



Brant, Claude and Alberta, House
Name of Property

Bourbon County, Kansas
County and State

Figure 1. Location map. Bing.com map accessed 29 March 2022.



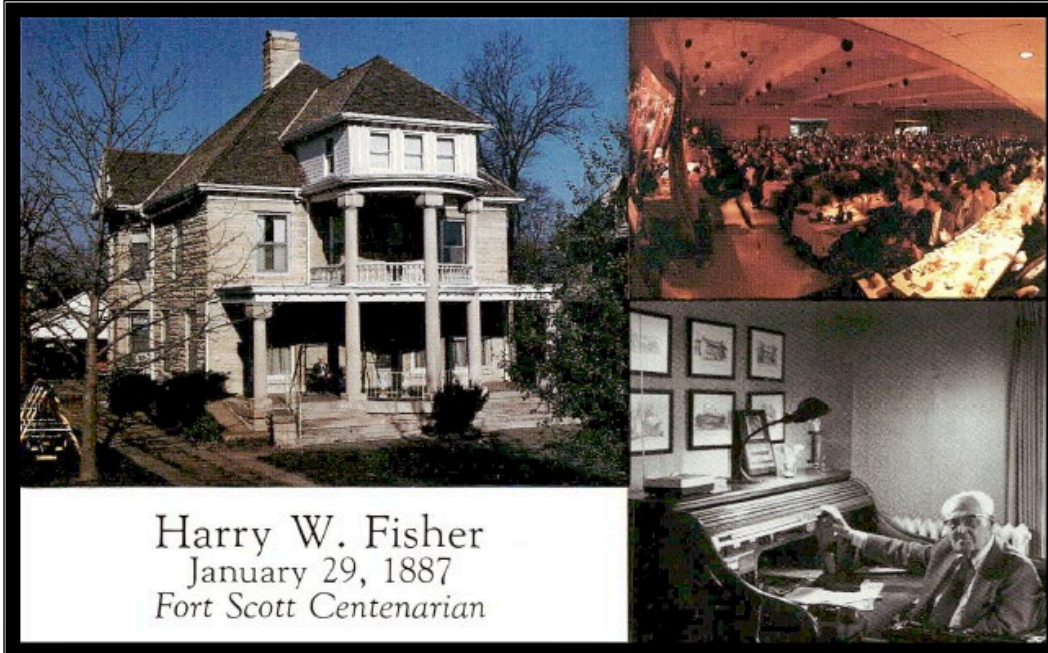
Brant, Claude and Alberta, House
Name of Property

Bourbon County, Kansas
County and State

Figure 2. Postcard showing Brant house. Image created between 1906 and 1912.



Figure 3. Commemorative postcard celebrating Harry Fisher's 100th birthday, 1987.



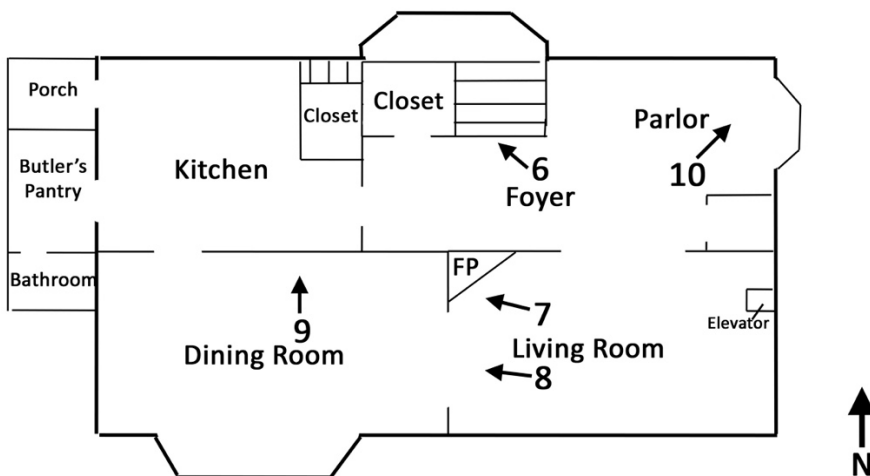
Brant, Claude and Alberta, House
Name of Property

Bourbon County, Kansas
County and State

Figure 4. Exterior photo map. Google Maps accessed 14 February 2022.



Figure 5. Interior plan of first floor and photo map. Susan Jezak Ford, not to scale.



Brant, Claude and Alberta, House
Name of Property

Bourbon County, Kansas
County and State

Figure 6. Interior plan of second floor. Susan Jezak Ford, not to scale.

