

Register of Historic Kansas Places Listed 2/4/2023

Kansas State Historical Society



Register of Historic Kansas Places Registration Form

This form is for use in nominating individual properties and districts. The format is similar to the National Register of Historic Places form. See instructions in How to Complete the National Register of Historic Places Registration Form (National Register Bulletin 16A). Complete each item by marking "x" in the appropriate box or by entering the information requested. If an item does not apply to the property being documented, enter "N/A" for "not applicable." For functions, architectural classification, materials, and areas of significance, enter only categories and subcategories from the instructions. Place additional entries and narrative items on continuation sheets. Use a typewriter, word processor, or computer, to complete all items.

1. Name of Property

Historic name U.S. Post Office – North Topeka Station
Other names/site number NOTO Arts Center
Name of related Multiple Property Listing N/A

2. Location

street & number 935 N. Kansas Ave
city or town Topeka
state Kansas code KS county Shawnee code SN zip code 66608
not for publication
vicinity

3-4. Certification

I hereby certify that this property is listed in the Register of Historic Kansas Places.

Applicable State Register Criteria: X A B C D

Signature of Patrick Zollner

Signature of certifying official/Title Patrick Zollner, Deputy SHPO

2-6-23

Date

Kansas State Historical Society
State agency

5. Classification

Ownership of Property
(Check as many boxes as apply)

- private
- public - Local
- public - State
- public - Federal

Category of Property
(Check only **one** box)

- building(s)
- district
- site
- structure
- object

Number of Resources within Property
(Do not include previously listed resources in the count.)

Contributing	Noncontributing	
1		buildings
		district
		site
		structure
		object
1		Total

Number of contributing resources previously listed in the State Register

N/A

National Register

6. Function or Use

Historic Functions
(Enter categories from instructions)

GOVERNMENT/post office

Current Functions
(Enter categories from instructions)

SOCIAL/clubhouse

RECREATION AND CULTURE/museum

LANDSCAPE/plaza

7. Description

Architectural Classification
(Enter categories from instructions)

LATE 19TH CENTURY AND 20TH CENTURY

REVIVALS/colonial revival

Materials
(Enter categories from instructions)

foundation: BRICK

walls: BRICK

GLASS

roof: SYNTHETIC

other: WOOD

STONE

Narrative Description

(Describe the current physical appearance of the property.)

Summary Paragraph *(Briefly describe the overall characteristics of the property and its location, setting, and size.)*

The NOTO Arts Center, (formerly the U.S. Post Office, North Topeka Station) located at 935 N. Kansas Ave., Topeka, Shawnee County, Kansas, occupies the northwest corner lot of the 900 block of N. Kansas Ave. where it intersects with N.W. Gordon St. Its prominent location marks what once was the north entrance to the North Topeka Business District. It is a single-story, rectangular building constructed of red brick with a flat roof and large multi-paned windows. This Colonial Revival style was popular in early 20th century architecture. The structure is small in size, only about 3,300 square feet on the main level, but impressive in its symmetry and style. The east-facing facade has a centrally located, large, arch-topped front entranceway flanked by 2 equally sized and evenly spaced arch-topped windows. All windows are double-hung sash windows with small panes or lights, characteristic of the Colonial Revival style. Two outer bays frame the central entrance bay, each with a single rectangular window symmetrically proportioned and placed. The west façade mirrors the front but with less formal squared off windows of like size. The north and south facades are identical to each other, with 3 large windows each. Inside, the main level is subtly divided into 3 sections, east to west. The original terrazzo floors remain exposed in the front section or what was the public space of the post office. High ceilings, woodwork, and original built-in wall cabinets enclosed with glass doors, also remain here.

An art gallery has been added to the south of the public vestibule with a drop ceiling and display lighting. The center section divides the front customer space from the large working utility space in the rear. With lower drop ceilings, this central space contains an office, kitchen, restroom, and the original walk-in safe. Original concrete floors, high ceilings, and wide-open space make up the section at the rear. The basement is built of brick walls with concrete floors and lower concrete ceilings. This space is currently used as storage space. Outside, sidewalks provide a pedestrian area between the building and N.W Gordon St. on the north and N. Kansas Ave. on the east. The entrance is marked by a raised slab front porch with steps leading down to the east sidewalk and a ramp sloping down to the south. Large concrete planters fill the space in front of the central bay and ramp. A matching red brick garage and loading dock, added post-1951, protrudes west from the original rear entrance vestibule and is centered on the back of the building. Two types of fencing enclose the property with a decorative black iron fence and gate dressing up the front façade and a chain link securing the back of the property from the alley to the west. A hand-painted paved pedestrian plaza has been created to link the open space to the south with the rest of the buildings on the west side of the 900 block of N. Kansas Ave. Considering the massive flood that damaged or destroyed many buildings in this area in 1951, the historic integrity remains, with the building looking unscathed and in remarkable condition. No longer used as a Post Office and re-named the NOTO Arts Center, it is now the northern cornerstone of the North Topeka Arts District called NOTO.



NOTO Arts Center – 935 N.W. Kansas Ave., Topeka, Shawnee County, KS (3-14-2022)

Elaboration *(Provide a detailed description of the building's exterior, interior, and any associated buildings on the property. Note any historic features, materials, and changes to the building/property.)*

Setting

In 1865, the City of Topeka was incorporated in North Topeka. Originally called Eugene, this part of the city was split from the rest by the Kansas River. It quickly became annexed by the southern section in 1867. North Topeka continued to grow despite the annexation and became a showplace of Victorian-era architecture with its own sense of community. Businesses such as a grocery store, movie theater, hardware store, and auto-repair shop sprang up along both sides of the 800-900 blocks of N. Kansas Ave. Running southwest to northeast, this section became lined with late 19th century to early 20th century and later commercial row buildings. In the 1940s and 1950s, the area became known as the thriving North Topeka Business District. Even residents from the south side planned special days to visit. It is bordered on the south by the Union Pacific railroad tracks and the adjacent Historic Great Overland Station, a fully restored, fine example of Neo-classical style. To the north, detached from the buildings on the west side, the former U.S. Post Office North Topeka Station, stands alone, marking the entrance into the North Topeka Business District, with its Colonial Revival, 1920s red brick exterior and corner lot. Across the alley to the west stands the matching but slightly more formal red brick historic North Topeka Baptist Church, another restored example of this classic style built in 1921.

In 1951, a devastating flood inundated not only the streets and blocks of downtown Topeka but also the North Topeka community, sending 35+ feet of water through the area. Buildings were heavily damaged or destroyed.



View from the northeast corner of N.W. Gordon St. at N. Kansas Ave., looking southwest

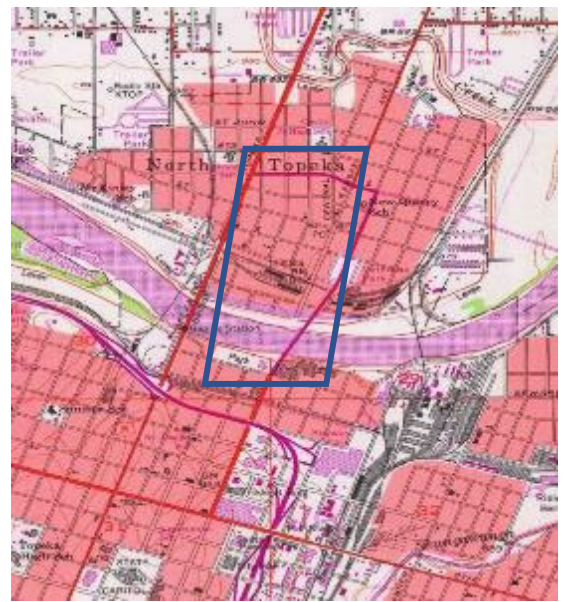
In 1965, the North Topeka Business District was confronted with another disaster. The Melan bridge that connected North Topeka to the Greater Topeka area to the south of the Kansas River collapsed. Then, the replacement Kansas Ave. bridge was built 1 block east, further isolating the business district. Many businesses could not survive these hardships and closed, allowing the buildings to fall into disrepair and for crime to settle in. The district remained in this state for decades.



1965 Melan Bridge Collapse (July 2, 1965)



Melan Bridge location to North Topeka (1951)



Kansas Ave. Bridge location to North Topeka (1976)

In the early 1980s the U.S. Postal Service discontinued use of the North Topeka Station located at 935 N. Kansas Ave. From this point on, several businesses occupied the building until 2014 when it was purchased and donated to serve as an arts center. Investors began purchasing other buildings along the 800-900 blocks of N. Kansas Ave. These buildings are being repurposed into a growing arts and cultural experience for the Topeka community and its visitors.

Exterior

The NOTO Arts Center's red brick Colonial Revival style exterior follows the rigid symmetry and classic proportions of this style. Between the raised basement and the first floor, a single soldier course of brick lines each elevation. The front façade has three bays, the outer two identical and less elaborate, and then the central bay, which boasts three large arched windows with the front door flanked by two large, equally sized and spaced arched windows. These arched windows are exquisite examples of the Palladian style, which has a larger center section and is separated from the two smaller divided glass side sections with decorative woodwork resembling pilasters. Decorative, carved wood arches top the windows. The entrance door and side lights are not historic, but the original fine glass fanlight with wood molding remains above. This section of three arches is defined as the front entry due to the outer bays that are defined by a slight bump out equally spaced on both sides. The outer bays each contain a single, centered rectangular window. All windows are double-hung sash style windows with the rectangular windows in a 6 over 9 lights pattern with the six as the upper portion and the three arched windows on the front façade being 6 over 12 lights.

Cast stone sills and decorative soldier course brick lintels also adorn the windows. In addition to the symmetry of the windows and front entry, there are rectangular cast stone plaques centered above each rectangular window on the front and two sides. Two cast stone medallions centered between each Palladian window at the front entrance are symmetrically in line with the stone plaques. The perimeter of the flat roof is enhanced with a simple stepped wood molding that creates a low parapet. On the west side of the property stands a single-story brick garage of the same construction with a loading dock and an enclosed breezeway connecting the two buildings. This part of the building was likely added post-1951. The north side features two garage door openings and the west has one central garage opening that faces the parking lot on the west side of the

property. Two ADA ramps have been added in recent years, and a combination of modern day fencing of wrought iron and chain link surrounds the lot. Contemporary metal signage marks the entrance into the district, and a sampling of art adorns the planter fronts. A 30' flag pole near the south end of the front façade stands as a reminder that this historic building once provided a service for its community as a post office and part of the United States federal government.

The ADA ramp descends to the south of the porch, and two equally sized, large concrete planters flank the center stairs leading to the front entrance. The planters are raised to the height of the porch, and one planter supports a large, horizontal metal "NOTO" sign. A smaller but identical NOTO sign is attached to the building, and rises vertically from a soldier course of brick at the north end of the front façade. The words "Arts Center" in neon lighting continue vertically to complete the building's signage, while a paved area surrounds the building on the north and west to provide off-street parking and delivery space. The other ADA ramp leads to the rear entrance.

Interior

The basement remains intact with the exception of three brick-infilled windows on the north side. The three window wells associated with these windows have also been filled in with soil and incorporated as part of the landscaping. All walls and support columns are built of brick. Most of the interior door openings are arched with either two or three soldier courses of brick, depending on the opening width. Single-width doors are topped off with two courses of brick, while three courses accent double doors. The arches are filled with wood panels above the original 5-panel wood doors with brass hardware. The basement floors are concrete, and iron railings and hand-rails accompany the concrete stairs to the ground level. A three-part, double door on the west exits to a flight of exterior stairs leading up to the pavement. Made of wood, each door has a 12-light window, and each sidelight has a 6-light window. Cast iron, wall-mounted sinks, and floor-mounted urinals with chrome fittings can also be found in the basement.

The ground level floor plan is split into thirds from front to back. A large, central area occupies the front third as public space, much as it would have as the original post office. Today this area functions as a waiting area or a space for small gatherings. The classic features, such as the original marble and terrazzo floors and the high ceilings with large, painted crown moldings remain. Original display cases for public postings with glass locking doors are still in use and adorn the perimeter of this room above painted wainscotting. A "high water mark" plaque and historical photos of the building during the 1951 flood are at the entrance of this large central vestibule. To the north, a hall leads to two ADA restrooms that occupy the front and central thirds. Porcelain tile, drop acoustical ceilings, lighting, and modern day 6-panel doors were added during this required update. The front third, south of the main entrance, has been remodeled with the addition of drop acoustical ceilings, track lighting, and carpet. This space is The Morris Gallery, which spotlights local artists and their work. The large, original windows keep the classic style intact in this room.

The rear third of the building functions as a multi-purpose room named Redbud Community Room. Formerly the back room of the Post Office, the original concrete floors are exposed, and the walls have been finished to the full height of the building's interior. New ductwork and electrical conduit are visible lining the ceiling and exterior walls. A three-section double door is equally flanked by two large historic windows on either side. This door is identical to the one described in the basement but with a large transom above. The central third divides the front and rear public spaces and provides space for an office, building utilities, storage, and a warming kitchen. A wide, centrally located open gallery with a mural connects the front of the building with the back. Aside from the original Post Office walk-in safe, which has become part of The Morris Gallery, this portion of the building has been completely remodeled using finishes consistent with the other remodeled spaces.

The building stands in its original location which associates it as a local landmark to the original business district and now to the new arts district. The red brick and white windows give the property a visual impact and are some of the character-defining features that maintain the building's historical feel. The integrity of the Classical style remains on the interior through its character features as well as the exterior, which evokes a feeling of historical importance inside and out.



“High Water Mark” Plaque and Photos, Historic 1951 Flood

8. Statement of Significance

Applicable Criteria

(Mark "x" in one or more boxes for the criteria qualifying the property for State Register listing)

- A Property is associated with events that have made a significant contribution to the broad patterns of our history.
- B Property is associated with the lives of persons significant in our past.
- C Property embodies the distinctive characteristics of a type, period, or method of construction or represents the work of a master, or possesses high artistic values, or represents a significant and distinguishable entity whose components lack individual distinction.
- D Property has yielded, or is likely to yield, information important in prehistory or history.

Criteria Considerations

(Mark "x" in all the boxes that apply)

Property is:

- A Owned by a religious institution or used for religious purposes.
- B removed from its original location.
- C a birthplace or grave.
- D a cemetery.
- E a reconstructed building, object, or structure.
- F a commemorative property.
- G less than 50 years old or achieving significance within the past 50 years.

Areas of Significance

(Enter categories from instructions)

Architecture

Period of Significance

1920

Significant Person

(Complete only if Criterion B is marked above)

N/A

Cultural Affiliation

Undefined

Architect/Builder

U.S. Treasury (Architect)

Lovel, J.D. (Contractor)

Period of Significance (justification)

The building was constructed in 1920, thus giving the property its historic significance for its architectural design in that year.ⁱ This building is a classic example of Colonial (US)(Georgian-UK) Revival style architecture. It was designed and owned by the federal government and operated as a U.S. Post Office from its completion in 1920 until closing sometime in the 1980s.

ⁱ Wallace, Douglass W., *Historic North Topeka (Tour Map)*, shawneecountyhistory.org/north-topeka, Topeka, KS

Criteria Considerations (explanation, if necessary)

N/A

Narrative Statement of Significance

Summary Paragraph (*Provide a summary paragraph that notes under what criteria the property is nominated.*)

The former U.S. Post Office - North Topeka Station, located at 935 N. Kansas Ave, acquired its historic significance in 1920 when it was constructed. Its significance relates to criterion C with its physical features and distinctive characteristics that define its architectural style as Colonial Revival, a popular style of the late 19th and 20th centuries. Designed by the Office of the Supervising Architect, U.S. Treasury Department, this style was a “typical federal building design issued in mid-twentieth century America.”ⁱⁱ This building holds significant integrity and character of the time, despite many hardships that devastated this area between its construction in 1920 and 2022.

Elaboration (*Provide a brief history of the property and justify why this property is locally significant.*)

Historically, North Topeka (formerly known as Eugene) was settled in 1865 by William Curtis and Louis Laurent and was later incorporated into the City of Topeka. The U.S. Post Office - North Topeka Station, was built in 1920. One of the 1,700 architects working for the U.S. Office of the Supervising Architect, a part of the Treasury Department, designed the building. Under the McAdoo Classification of a “small post office,” the building would be designed using “brick with standard wood windows and doors” and would have an “ordinary” appearance.ⁱⁱⁱ Its Colonial Revival style reflects an understated, yet impressive presence “typical of federal building design issued in mid-twentieth century America.”

As the cornerstone of what once was the thriving North Topeka Business District in the 1940s and 1950s, the building and its function survived several hardships, including the flood of 1951, that other businesses in this 2-block area could not. Crime replaced commerce in the mid-1900s^{iv} and eventually, the U.S. Postal Service discontinued the use of this building in the early 1980s. Several businesses occupied it over the years until 2014 when it was privately purchased and donated to become an arts center. The former Post Office became the home to the NOTO Arts Center with an art gallery for local art and space for artists and the general public to gather. A push for an arts and entertainment district followed and the once desolate 800-900 blocks of N. Kansas Ave. have become the bustling Historic North Topeka (NOTO) Arts & Entertainment District. Retail shops, salons, galleries, restaurants, entertainment, and other businesses are moving into the late 19th and 20th century row buildings and revitalization is taking place^v. This classic building remains a cornerstone but has a new function that is just as suitable as its original purpose. It has and will continue to contribute to the history of North Topeka.

ⁱⁱ Craven, Jackie, “*Post Office Buildings in the United States*”, thoughtco.com/post-office-buildings-united-states-178502, 2019/07/09, page 11

ⁱⁱⁱ Lockley, “*James A. Wetmore*”, en.wikipedia.org/wiki/James_A._Wetmore, 2009/08/24, page 1

^{iv} Childers, Brianna, “*From North Topeka business district to NOTO, the area has thrived on grit, community*” cjonline.com/story/news/local/2020/09/06/from-north-topeka-business-district-to-noto-the-area-has-thrived-on-grit-community/114865492/, Topeka, KS, 2020/09/06

^v Author unknown, “*Relive NOTO History*”, explorenoto.org/about/#history, Topeka, KS



***Looking south from the intersection of N. Kansas Ave. and N.W. Gordon St.
North entrance into NOTO Arts & Entertainment District, NOTO Arts Center on right***

As of this date, the City of Topeka has many properties nearby the NOTO Arts Center and dotted around the city that represent the classic Victorian-era styles of architecture that includes the Colonial Revival style. Built in the 1920s and 1930s, these properties include the restored, Historic North Topeka Baptist Church, built in 1921, in the Colonial Revival style; the fully restored, Historic Great Overland Station, built in 1925-1927, in the free Classical Style; Randolph School, built in 1927, a 2-story brick Colonial; Fleming Mansion, built in 1926 in the Colonial Revival style and the Alf Landon House, built in 1936 in the Colonial Revival style. Entire neighborhoods and developments were also built in the Colonial style. Some examples are the Country Club Addition, developed in the 1920s and 1930s approximately 2 miles south of downtown, which includes the classic Fuller House residence built in 1937-1938 in the Neo-Classical style and the Crittenton House built in 1930, a brick Colonial Revival home for unwed Mothers. The neighborhoods of Westboro, Collins Park, College Hill, and Holliday Park were also developed in the Colonial Revival style in the 1920s and 1930s.



***Historic North Topeka Baptist Church (2020)
123 N. Gordon St.***



***Historic Great Overland Station (2012)
701 N. Kansas Ave.***



***Randolph Elementary School (ca 1927)
1400 SW Randolph Ave.***



***Fleming Mansion (2003)
413 Riverhill Rd. (current location – originally
located at 10th and Gage)***



***Alf Landon Home (2017)
521 SW Westchester Rd.***

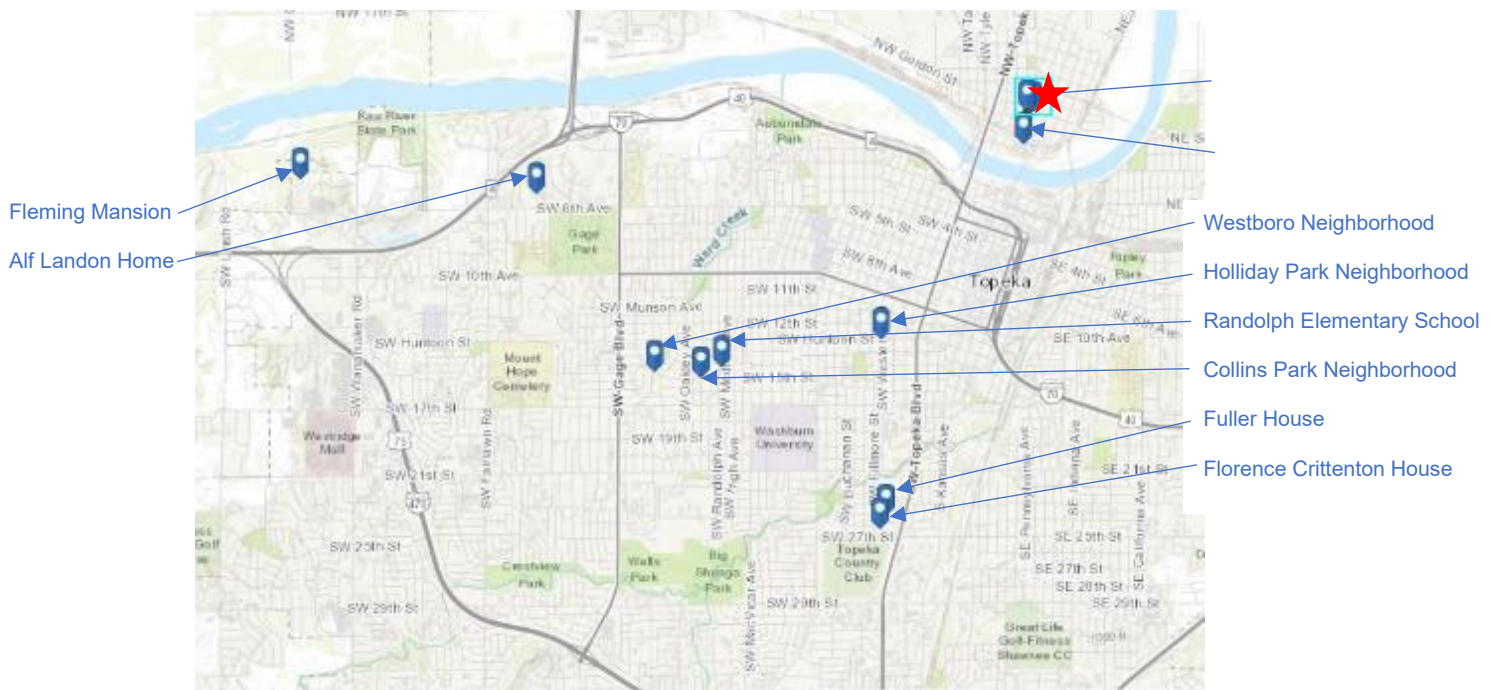


**Fuller House, Country Club Addition (2018)
(2018)**

Florence Crittenton House, Country Club Addition

807 SW Terrace Ave.

2601 SW Western Ave.



Comparative Properties Map

Conclusion:

The NOTO Arts Center (formerly the U.S. Post Office - North Topeka Station), was built in 1920 and has maintained its architectural details as a fine example of Colonial Revival style. This building is eligible for listing on the Register of Historic Kansas for criterion C under Architecture. The historic integrity has not been lost to the disasters and hardships the surrounding community has endured. Its architectural features of the Colonial Revival style are significant and remain remarkably intact.

9. Major Bibliographical References

Bibliography (Cite the books, articles, and other sources used in preparing this form)

- Author** unknown, “*Relive NOTO History*”, explorenoto.org, Topeka, KS
- Childers**, Brianna, “*From North Topeka business district to NOTO, the area has thrived on grit, community*” cjonline.com, Topeka, KS, 2020/09/06
- Craven**, Jackie, “*Post Office Buildings in the United States*”, thoughtco.com, 2019/07/09
- Lockley**, “*James A. Wetmore*”, en.wikipedia.org 2009/08/24
- Wallace**, Douglass W., *Historic North Topeka (Tour Map)*, shawneecountyhistory.org, Topeka, KS
- Wentworth**, AIA, Bruce, “*Colonial Revival*”, askthearchitect.org/architectural/styles/colonial-revival-architecture, Chevy Chase, MD

10. Geographical Data

Acreeage of Property .45 acres

Provide latitude/longitude coordinates OR UTM coordinates.
(Place additional coordinates on a continuation page.)

Latitude/Longitude Coordinates

Datum if other than WGS84: _____
(enter coordinates to 6 decimal places)

1	<u>39.068892</u> Latitude:	<u>-95.666389</u> Longitude:	3	<u> </u> Latitude:	<u> </u> Longitude:
2	<u> </u> Latitude:	<u> </u> Longitude:	4	<u> </u> Latitude:	<u> </u> Longitude:

Verbal Boundary Description (describe the boundaries of the property)

EUGENE ADDITION, Lot 97: N. 37.5 FT OF LOT 97 x 175 FT & ALL Lot 99: 75 FT X 175 FT. Bound on the north by N.W. Gordon St., on the south by 927 N. Kansas Ave. (row store), on the east by N. Kansas Ave., and on the west by an alley that runs between properties on the east side of N.W. Jackson St. and the west side of N. Kansas Ave.

Boundary Justification (explain why the boundaries were selected)

The boundary selected is based on the lot lines for 935 N. Kansas Ave. found in the Shawnee County Assessor’s Records on the parcel, plat and property maps and the Tract Description on the associated property record.

11. Form Prepared By

name/title Janie Bartee, Consultant, Bryan Falk/Architect
organization Falk Architects, Inc date 5/31/2022
street & number 827 N. Van Buren St telephone 785-224-0352
city or town Topeka state KS zip code 66603
e-mail janie@falk-architects.com, bryan@falk-architects.com

Property Owner:

name North Topeka Arts District Inc.
street & number 935 N. Kansas Ave telephone 785-408-8996
city or town Topeka state KS zip code 66608

Additional Documentation

Submit the following items with the completed form:

Photographs

Submit clear and descriptive photographs. The size of each digital image must be 1600x1200 pixels (minimum), at 300 ppi (pixels per inch) or larger. Key all photographs to a sketch map or aerial map. Each photograph must be numbered and that number must correspond to the photograph number on the photo log. For simplicity, the name of the photographer, photo date, etc. may be listed once on the photograph log and doesn't need to be labeled on every photograph.

Photograph Log

Name of Property: NOTO Arts Center (935 N. Kansas Ave)
City or Vicinity: North Topeka
County: Shawnee State: Kansas
Photographer: Bryan Falk
Date Photographed: Photos #1 - 20: Taken 2017-02-23, Photos #21 - 27 Taken 2018-06-15, Photos #28 - 82 Taken 2022-02-23, Photos #83 - 91 Taken 2022-03-14

Description of Photograph(s) and number, include description of view indicating direction of camera:

Photo #1	KS_Shawnee County_935 N. Kansas Ave. – Basement Studio 002, looking south at opening to Bathroom 010
Photo #2	KS_Shawnee County_935 N Kansas Ave. – Basement Studio 002, looking North
Photo #3	KS_Shawnee County_935 N. Kansas Ave. – Basement Studio 002, looking West at Double doors to Studio 001
Photo #4	KS_Shawnee County_935 N. Kansas Ave. – Basement Studio 001, looking West at Double doors to outside
Photo #5	KS_Shawnee County_935 N. Kansas Ave. – Basement Studio 001, looking West at Double doors and steps to outside

Photo #6	KS_Shawnee County_935 N. Kansas Ave. – Basement Studio 001, looking Northwest into Studio 003
Photo #7	KS_Shawnee County_935 N. Kansas Ave. – Basement Studio 003, looking Southeast into Studio 001
Photo #8	KS_Shawnee County_935 N. Kansas Ave. – Basement Mech 008, looking Southwest at Electrical panels
Photo #9	KS_Shawnee County_935 N. Kansas Ave. – Basement Mech 008, looking Southeast
Photo #10	KS_Shawnee County_935 N. Kansas Ave. – Basement Mech 008, looking South at arched doorway to Studio 009
Photo #11	KS_Shawnee County_935 N. Kansas Ave. – Basement Room 011, looking up Basement stairs to Ground level Multi-purpose Room
Photo #12	KS_Shawnee County_935 N. Kansas Ave. – Basement Room 011, looking Northeast through Room 012
Photo #13	KS_Shawnee County_935 N. Kansas Ave. – Basement Studio 009, looking southwest at west window
Photo #14	KS_Shawnee County_935 N. Kansas Ave. – Basement Bath 010, looking Northeast into Studio 002
Photo #15	KS_Shawnee County_935 N. Kansas Ave. – Basement Bath 010, looking up at top of North opening
Photo #16	KS_Shawnee County_935 N. Kansas Ave. – Basement Room 012, looking East
Photo #17	KS_Shawnee County_935 N. Kansas Ave. – Basement Studio 001, looking at Southeast corner with sink
Photo #18	KS_Shawnee County_935 N. Kansas Ave. – Basement Studio 001, looking North at arched doorway to Nook 006
Photo #19	KS_Shawnee County_935 N. Kansas Ave. – Basement Nook 006, looking East up Basement stairs to Ground level Lobby
Photo #20	KS_Shawnee County_935 N. Kansas Ave. – Basement Storage 004, looking West
Photo #21	KS_Shawnee County_935 N. Kansas Ave. – Basement Mech 008, looking Southwest at Electrical panels
Photo #22	KS_Shawnee County_935 N. Kansas Ave. – Basement Mech 008, looking Northwest at exit
Photo #23	KS_Shawnee County_935 N. Kansas Ave. – Basement Studio 001, looking Northeast at East wall
Photo #24	KS_Shawnee County_935 N. Kansas Ave. – Basement Mech 008, looking West at Electrical panel
Photo #25	KS_Shawnee County_935 N. Kansas Ave. – Basement Storage 004, looking West
Photo #26	KS_Shawnee County_935 N. Kansas Ave. – Basement Bath 010, looking North at Angled Northwest wall/West wall
Photo #27	KS_Shawnee County_935 N. Kansas Ave. – Basement Room 011, looking West from Bathroom 010
Photo #28	KS_Shawnee County_935 N. Kansas Ave. – Level 1 Multipurpose Room, looking North
Photo #29	KS_Shawnee County_935 N. Kansas Ave. – Level 1 Multipurpose Room, looking South
Photo #30	KS_Shawnee County_935 N. Kansas Ave. – Level 1 Multipurpose Room, looking Southwest at Double doors to garage
Photo #31	KS_Shawnee County_935 N. Kansas Ave. – Level 1 Multipurpose Room, looking Southeast through Double doors to Lobby
Photo #32	KS_Shawnee County_935 N. Kansas Ave. – Level 1 Lobby, looking East at front entrance
Photo #33	KS_Shawnee County_935 N. Kansas Ave. – Level 1 Lobby, looking North

Photo #34	KS_Shawnee County_935 N. Kansas Ave. – Level 1 Lobby, looking West at Double Door to garage
Photo #35	KS_Shawnee County_935 N. Kansas Ave. – Level 1 Lobby, looking South through Gallery entrance
Photo #36	KS_Shawnee County_935 N. Kansas Ave. – Level 1 Gallery, looking Southeast
Photo #37	KS_Shawnee County_935 N. Kansas Ave. – Level 1 Gallery, looking Southwest
Photo #38	KS_Shawnee County_935 N. Kansas Ave. – Level 1 Gallery, looking Northwest
Photo #39	KS_Shawnee County_935 N. Kansas Ave. – Level 1 Gallery, looking North to Lobby
Photo #40	KS_Shawnee County_935 N. Kansas Ave. – Level 1 Gallery, looking East
Photo #41	KS_Shawnee County_935 N. Kansas Ave. – Level 1 Gallery, looking Southeast
Photo #42	KS_Shawnee County_935 N. Kansas Ave. – Level 1 Gallery, looking Northwest at Safe and Kitchen door
Photo #43	KS_Shawnee County_935 N. Kansas Ave. – Level 1 Gallery, looking West at Safe door
Photo #44	KS_Shawnee County_935 N. Kansas Ave. – Level 1 Gallery, looking Southwest
Photo #45	KS_Shawnee County_935 N. Kansas Ave. – Level 1 Lobby, looking Northeast from Gallery entrance
Photo #46	KS_Shawnee County_935 N. Kansas Ave. – Level 1 Lobby, looking Northwest from Gallery entrance
Photo #47	KS_Shawnee County_935 N. Kansas Ave. – Level 1 Lobby, looking Northwest to Multipurpose room
Photo #48	KS_Shawnee County_935 N. Kansas Ave. – Level 1 Lobby, looking East at entrance
Photo #49	KS_Shawnee County_935 N. Kansas Ave. – Level 1 Lobby, looking North
Photo #50	KS_Shawnee County_935 N. Kansas Ave. – Level 1 Lobby, looking South
Photo #51	KS_Shawnee County_935 N. Kansas Ave. – Level 1 Office, looking Southwest
Photo #52	KS_Shawnee County_935 N. Kansas Ave. – Level 1 Office, looking Northwest
Photo #53	KS_Shawnee County_935 N. Kansas Ave. – Level 1 Lobby, looking North through Hallway
Photo #54	KS_Shawnee County_935 N. Kansas Ave. – Level 1 Lobby, looking North through Hallway
Photo #55	KS_Shawnee County_935 N. Kansas Ave. – Level 1 Lobby, looking Northwest down stairs to Basement Nook 006
Photo #56	KS_Shawnee County_935 N. Kansas Ave. – Level 1 Lobby, looking Northwest inside of stairwell
Photo #57	KS_Shawnee County_935 N. Kansas Ave. – Level 1 Janitor Closet, looking West
Photo #58	KS_Shawnee County_935 N. Kansas Ave. – Level 1 Men, looking Southwest from door
Photo #59	KS_Shawnee County_935 N. Kansas Ave. – Level 1 Men, looking West from door
Photo #60	KS_Shawnee County_935 N. Kansas Ave. – Level 1 Lobby, looking West at North Hall
Photo #61	KS_Shawnee County_935 N. Kansas Ave. – Level 1 Women, looking Southeast from door
Photo #62	KS_Shawnee County_935 N. Kansas Ave. – Level 1 Women, looking Southeast at window

Photo #63	KS_Shawnee County_935 N. Kansas Ave. – Level 1 Kitchen, looking South from Lobby
Photo #64	KS_Shawnee County_935 N. Kansas Ave. – Level 1 HVAC, looking West at door from Kitchen
Photo #65	KS_Shawnee County_935 N. Kansas Ave. – Level 1 Storage, looking down stairs to Basement Room 011
Photo #66	KS_Shawnee County_935 N. Kansas Ave. – Basement Room 011, looking Northeast from stairs to Bathroom 010 door
Photo #67	KS_Shawnee County_935 N. Kansas Ave. – Basement Studio 009, looking Northwest at Mechanical 008
Photo #68	KS_Shawnee County_935 N. Kansas Ave. – Basement Room 011, looking Southwest from outside of Bathroom 010 door
Photo #69	KS_Shawnee County_935 N. Kansas Ave. – Basement Room 011, looking Southwest from Bathroom 010 door
Photo #70	KS_Shawnee County_935 N. Kansas Ave. – Basement Bath 010, looking East at sink and urinals
Photo #71	KS_Shawnee County_935 N. Kansas Ave. – Basement Bath 010, looking Southeast at sink and urinal
Photo #72	KS_Shawnee County_935 N. Kansas Ave. – Basement Bath 010, looking Southwest toward window and shower
Photo #73	KS_Shawnee County_935 N. Kansas Ave. – Basement Studio 002, looking North
Photo #74	KS_Shawnee County_935 N. Kansas Ave. – Basement Studio 002, looking South
Photo #75	KS_Shawnee County_935 N. Kansas Ave. – Basement Nook 006, looking West
Photo #76	KS_Shawnee County_935 N. Kansas Ave. – Basement Nook 006, looking East
Photo #77	KS_Shawnee County_935 N. Kansas Ave. – Basement Studio 003, looking Northwest
Photo #78	KS_Shawnee County_935 N. Kansas Ave. – Basement Studio 003, looking Northeast
Photo #79	KS_Shawnee County_935 N. Kansas Ave. – Basement Mechanical 008, looking Northeast from Mechanical 008
Photo #80	KS_Shawnee County_935 N. Kansas Ave. – Basement Mechanical 008, from West wall looking East
Photo #81	KS_Shawnee County_935 N. Kansas Ave. – Basement Studio 001, looking Southeast
Photo #82	KS_Shawnee County_935 N. Kansas Ave. – Basement Studio 001, looking Southwest at West wall
Photo #83	KS_Shawnee County_935 N. Kansas Ave. – looking Northwest at Exterior South and East facades
Photo #84	KS_Shawnee County_935 N. Kansas Ave. – looking Northwest at Exterior East facade
Photo #85	KS_Shawnee County_935 N. Kansas Ave. – looking Southwest at Exterior North and East facades
Photo #86	KS_Shawnee County_935 N. Kansas Ave. – looking Southwest at Exterior North facade
Photo #87	KS_Shawnee County_935 N. Kansas Ave. – looking Southeast at Exterior North and Northwest façade, garage
Photo #88	KS_Shawnee County_935 N. Kansas Ave. – looking Southeast at Exterior Northwest façade, garage
Photo #89	KS_Shawnee County_935 N. Kansas Ave. – looking East at Exterior West façade, garage
Photo #90	KS_Shawnee County_935 N. Kansas Ave. – looking Northeast at Exterior Southwest façade, garage
Photo #91	KS_Shawnee County_935 N. Kansas Ave. – looking Northeast at Exterior South façade, garage



Photo Map

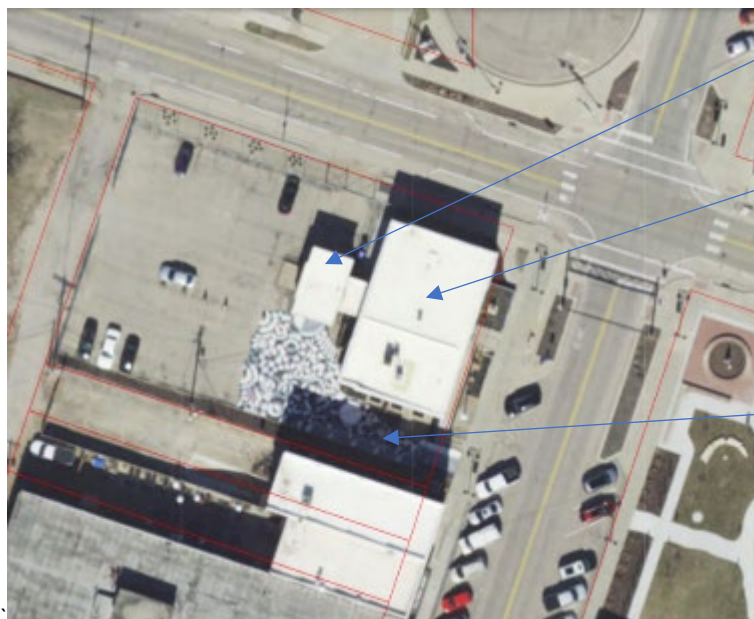
Figures

Include GIS maps, figures, scanned images below.



[NOTO Arts Center](#) -
formerly U.S. Post
Office - North Topeka
Station (ca. 1920)
935 N. Kansas Ave,
Topeka, Shawnee
County, Kansas

Property Map

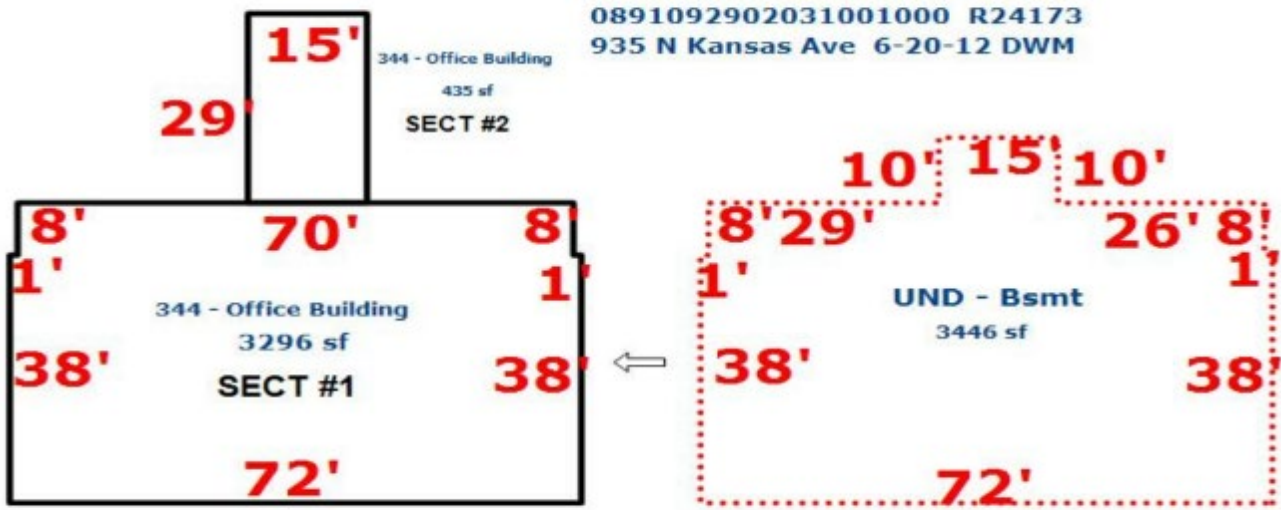


Garage/Loading Dock
Addition (ca. 1961)

[NOTO Arts Center](#) -
formerly U.S. Post
Office - North Topeka
Station (ca. 1920)
935 N. Kansas Ave,
Topeka, Shawnee
County, Kansas

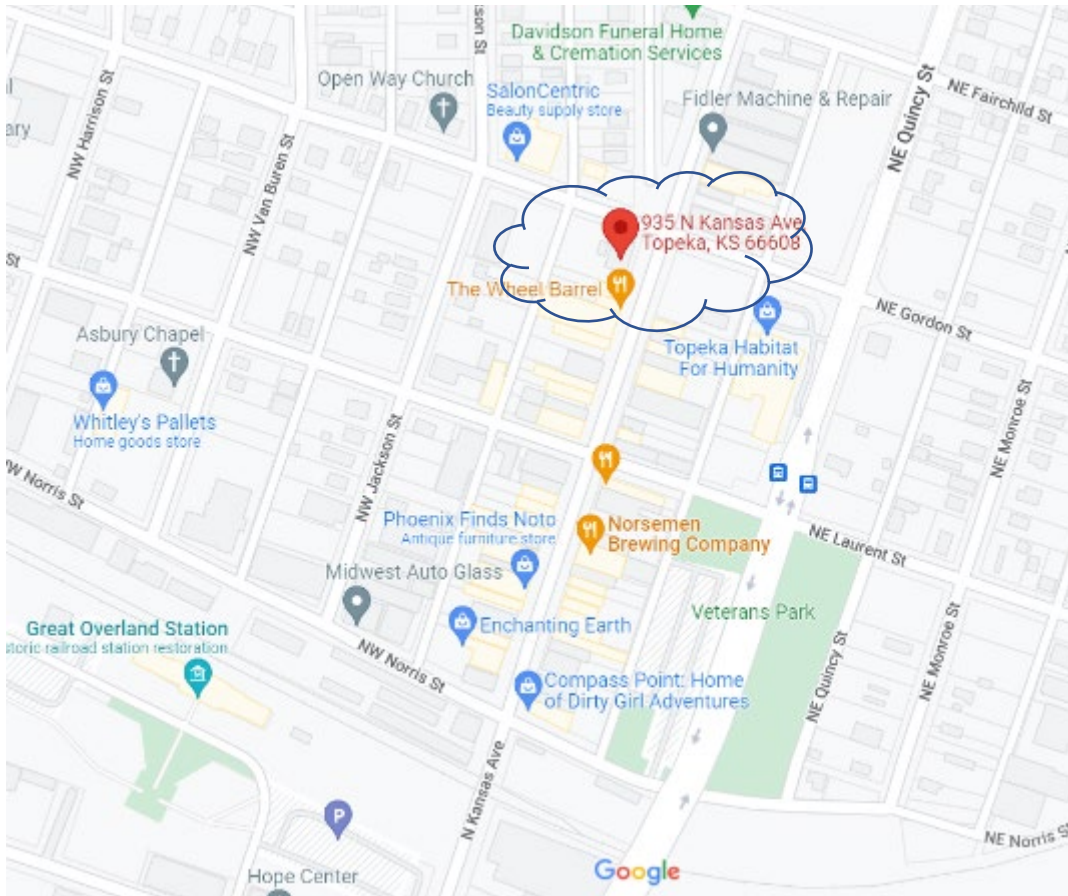
Pedestrian Plaza

Google Earth Image



NOTO Arts Center -
formerly U.S. Post Office - North Topeka
Station (ca. 1920)
935 N. Kansas Ave,
Topeka, Shawnee
County, Kansas
Lots 99, 97 (partial)

Parcel Map



Vicinity Map



Topography Map

Historic North Topeka Baptist Church

NOTO Arts Center - formerly U.S. Post Office - North Topeka Station (ca. 1920) 935 N. Kansas Ave, Topeka, Shawnee County, Kansas

Historic Great Overland Station



Photo 1



Photo 2



Photo 3



Photo 4



Photo 5



Photo 6



Photo 7



Photo 8



Photo 9



Photo 10



Photo 11



Photo 12



Photo 13



Photo 14



Photo 15



Photo 16



Photo 17



Photo 18



Photo 19



Photo 20



Photo 21



Photo 22



Photo 23



Photo 24



Photo 25



Photo 26



Photo 27



Photo 28



Photo 29



Photo 30



Photo 31



Photo 32



Photo 33



Photo 34



Photo 35



Photo 36



Photo 37



Photo 38



Photo 39



Photo 40



Photo 41

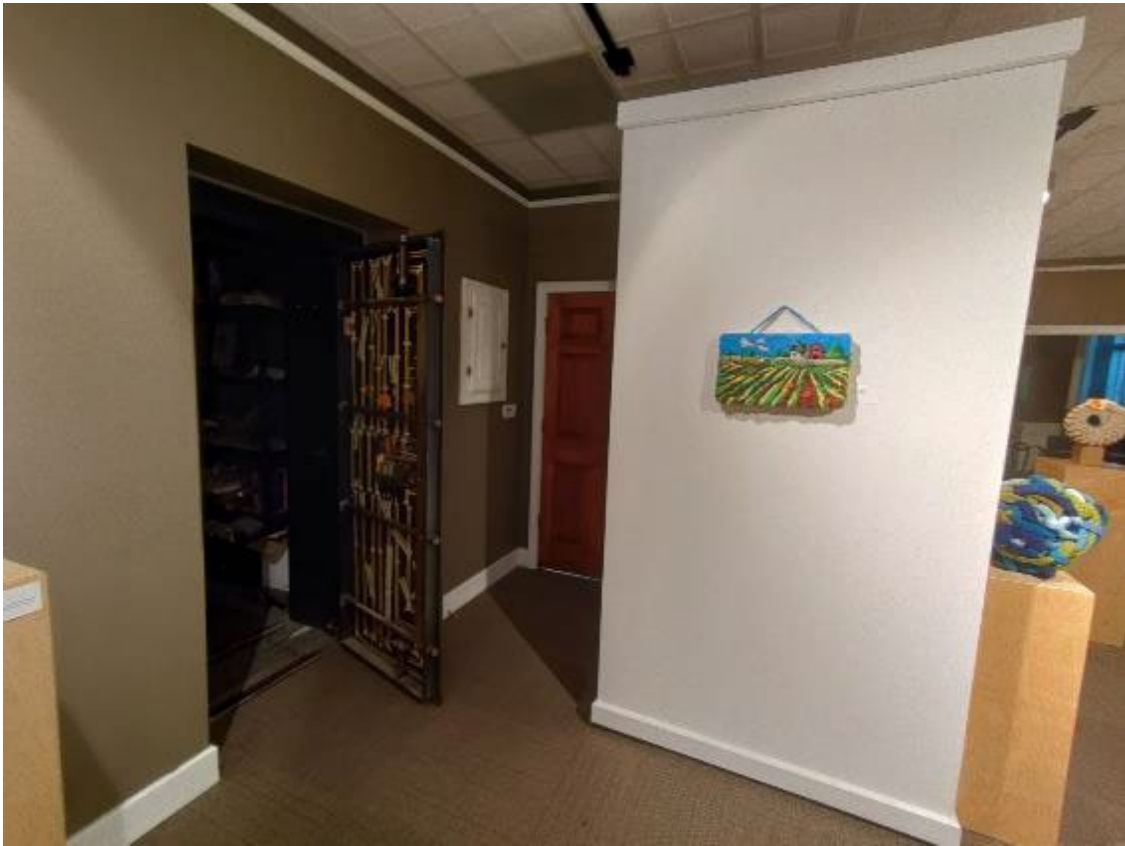


Photo 42



Photo 43



Photo 44



Photo 45



Photo 46

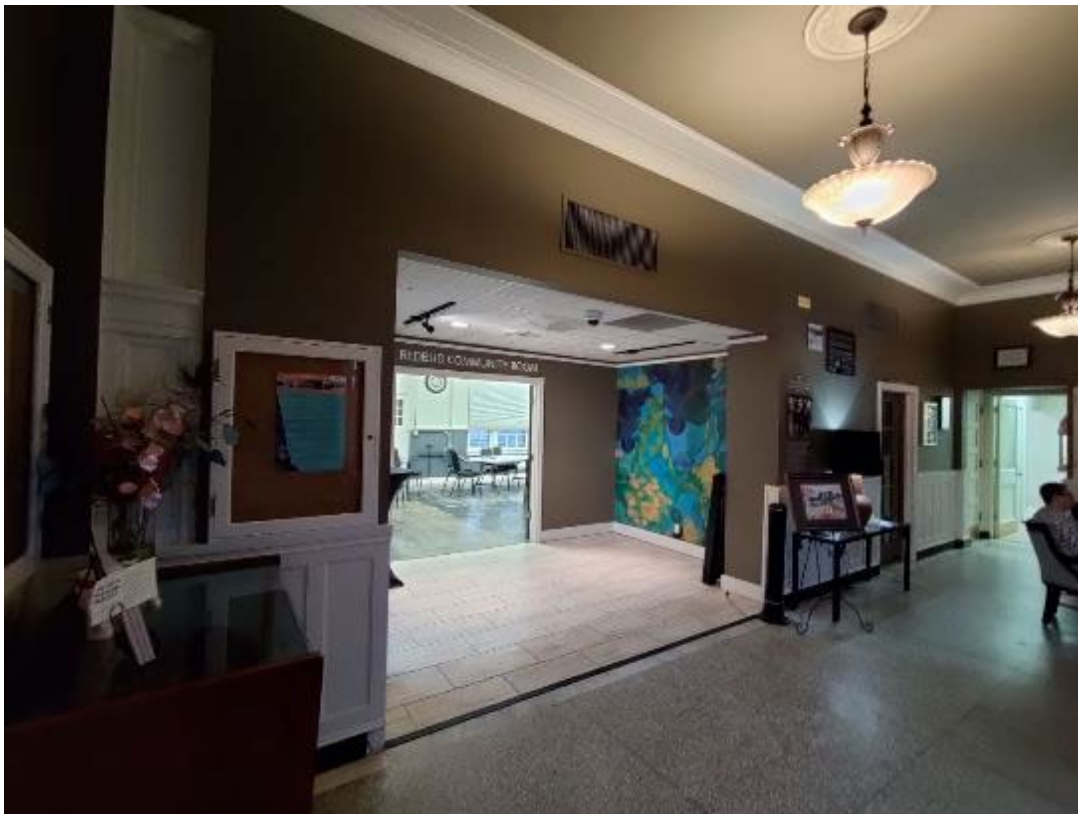


Photo 47



Photo 48

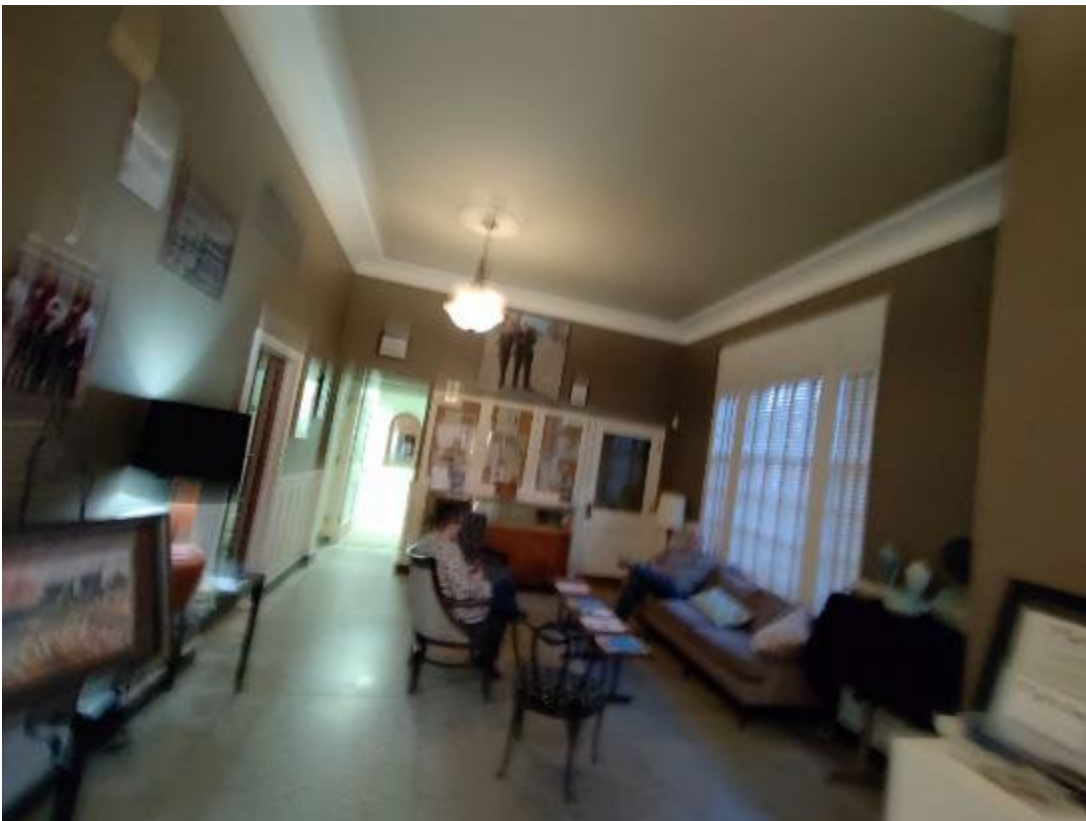


Photo 49



Photo 50



Photo 51



Photo 52



Photo 53

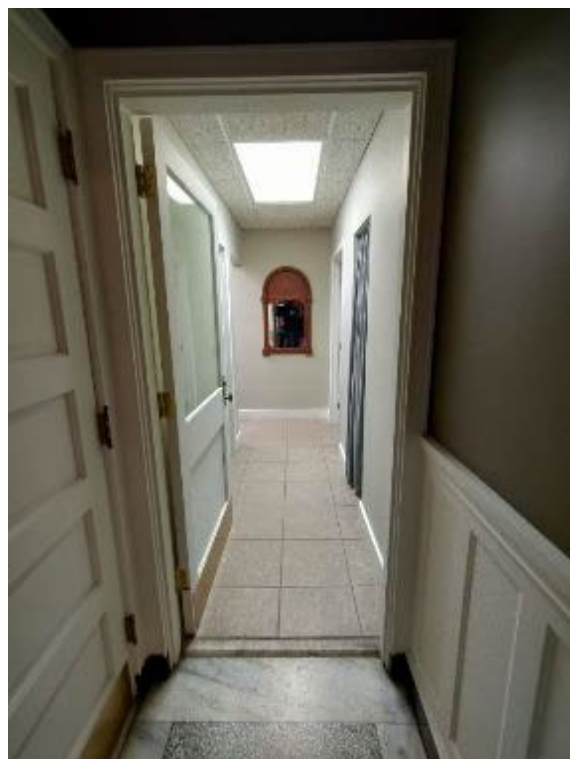


Photo 54



Photo 55



Photo 56



Photo 57



Photo 58



Photo 59



Photo 60



Photo 61



Photo 62



Photo 63

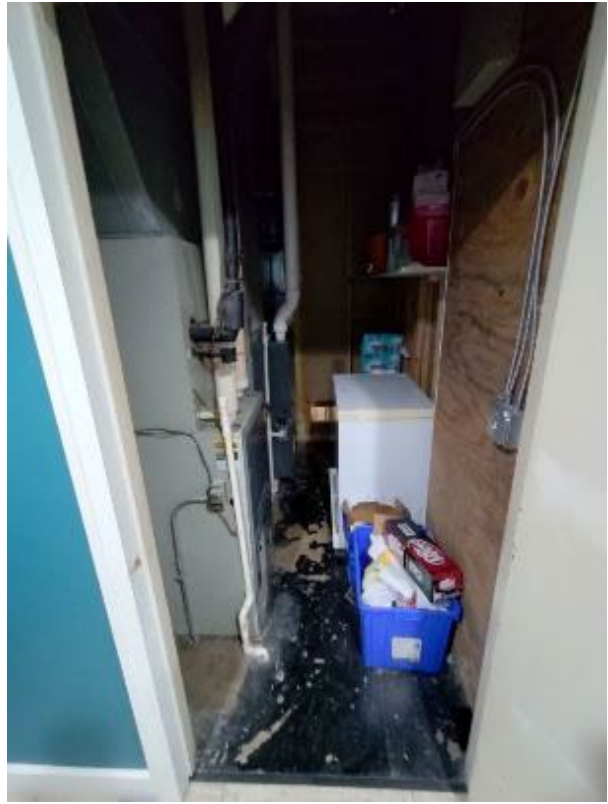


Photo 64



Photo 65

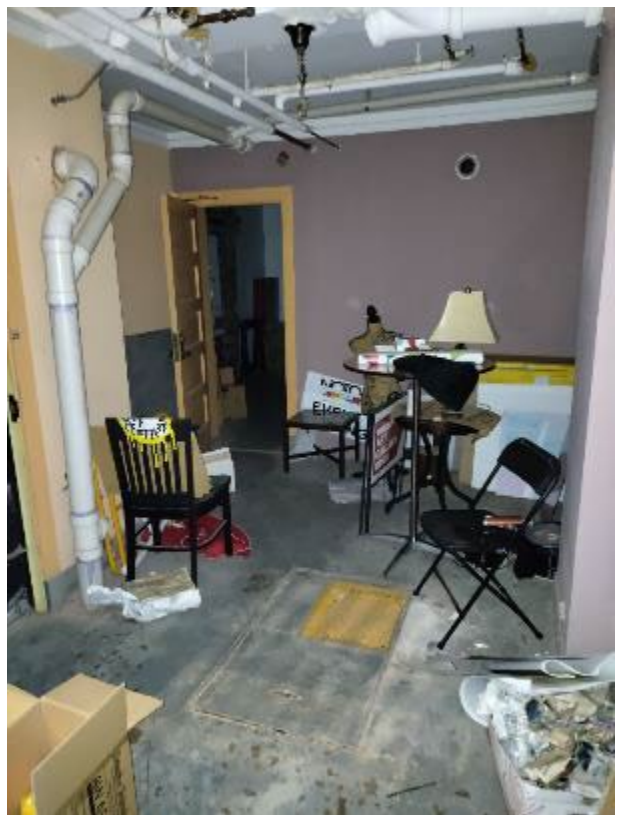


Photo 66

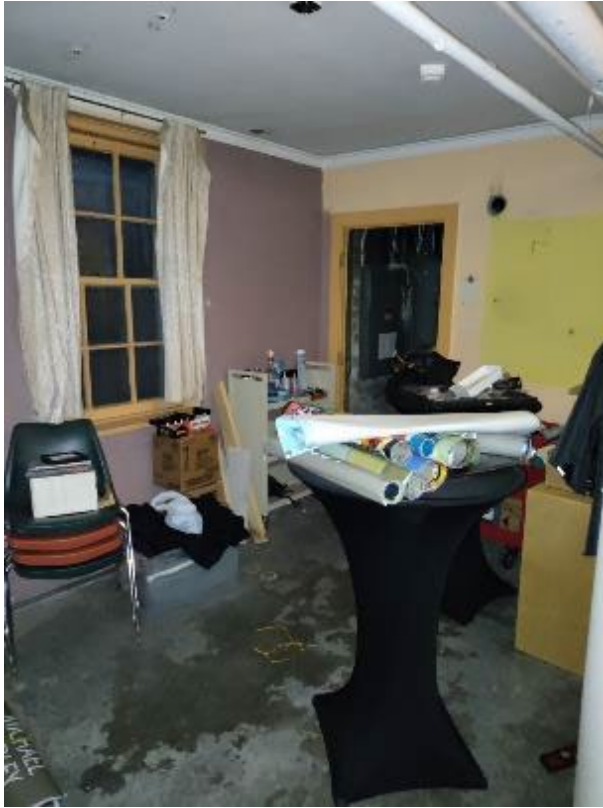


Photo 68



Photo 69



Photo 70



Photo 71



Photo 72



Photo 73



Photo 74



Photo 75



Photo 76



Photo 77



Photo 78



Photo 79



Photo 80



Photo 81



Photo 82



Photo 83



Photo 84



Photo 85



Photo 86



Photo 87



Photo 88



Photo 89



Photo 90



Photo 91