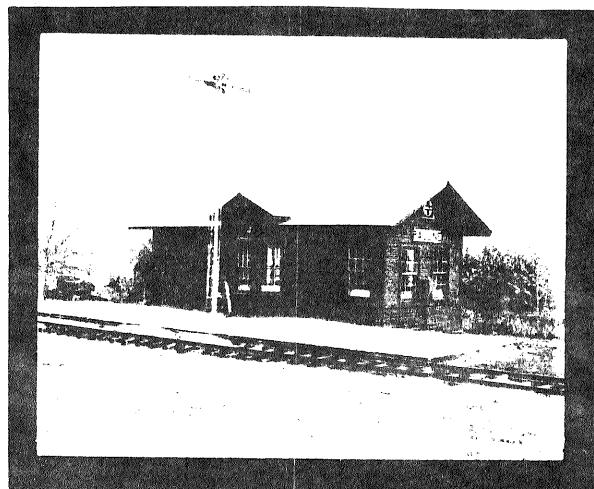


THE SANTA FE PAULINE DEPOT



The Santa Fe Railway Company...when and where did it all start? Right here in Topeka! The Santa Fe Trail inspired the imagination of Cyrus K. Holliday who founded this city in 1854 which soon after became the home of the Santa Fe Railway Co. In 1859 Holliday drew the charter for the railroad but it was not until October 30, 1868 that the first shovelful of earth was turned to officially begin construction. The original main line headed south out of Topeka in April 1869 through the area now known as "Pauline", reaching Burlingame on July 1st and Emporia on July 20, 1869. The new railroad was anxious to reach Burlingame to gain access to the coal mines to supply much needed coal for its steam engines and then pushed on to the southwest to Emporia which was then known as a major cattle trade area.

Pauline was the first town south of Topeka and this depot was originally constructed in 1910 at a cost of \$985.00. It was built on the west side of the main line track at what is now Mile Post 57 plus 1,816 feet on the First District of the Eastern Division. It was shown as Building #1 and is 40 feet in length and 16 feet wide.

The "Standard" wooden construction frame depot is typical of most of the stations used by the Santa Fe on branch lines built all over the Santa Fe System shortly after the turn of the century. The Pauline Depot reached its peak of activity during World War II and in 1942 a 12 foot extension was added to the south end of the baggage room. This addition was removed when it was moved to its present site.

The last record of the Pauline Station being served as a scheduled stop for Santa Fe passenger trains was in 1957. Although Santa Fe and Amtrak trains continued to run by the depot it was used only as an office by agents and clerks to process railroad freight business for the Forbes Air Base. The station was officially closed on October 27, 1982. It was then donated to Historic Ward-Meade Park by The AT&SF Railway Co. and removed from railroad property on August 11, 1983. The following day, August 12th, it was set in place at its present location.

In the two years which followed it underwent major restoration by donated labor from members of the Topeka Chapter of the National Railroad Historical Society and with funds provided by Historic Ward-Meade Park. During this time the 200 feet of trackage in front of the station was also donated by the Santa Fe Railroad and was laid along with the brick platform by a contractor.

As you view this vintage railroad display, do you know of additional appropriate items which would add to a more complete restoration? We need your help and donations. Please call or write Dianne Rein, Executive Director, Historic Ward-Meade Park, 124 N. Fillmore, Topeka, Kansas 66609, phone AC 913-235-0806.